



9924309387 / 9558844655

matrin
Industrial Technology

Madhav Industrial Park, Phase-II, Plot No.2/ Part-2,
Garden City Road, Ankleshwar-393002



MANUFACTURER OF :-

Manufacturing of All types of industrial Filter and
all type of cartridges and filter bags

SS.wire Braided Corrugated Hose, PTFE (Teflon) Hose,
High Pressure Hydraulic Hose, Chemical and Rubber Hose Assemblies.

**WE ARE A LEADING DESIGNER OF HIGH-TEMPERATURE & HIGH-PRESSURE
GAS / FLUID CONDUITS IN MISSION CRITICAL SYSTEMS**

SS CORRUGATED FLEXIBLE HOSES

S.S. Corrugated hose inner tube butt welded and hit to corrugated form.
MOC 304 / 316 / 321 with outer braiding S.S. wire knitted MOC 304.
End Connection M.S. / S.S. swivel nut & M.S. / S.S. flanges

Size : 6mm (1/4 ") to 300 mm (12")

APPLICATIONS :

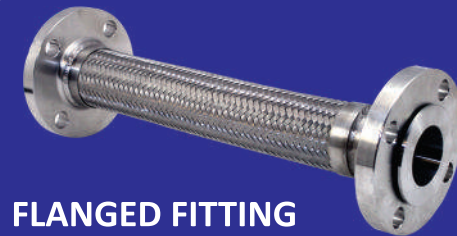
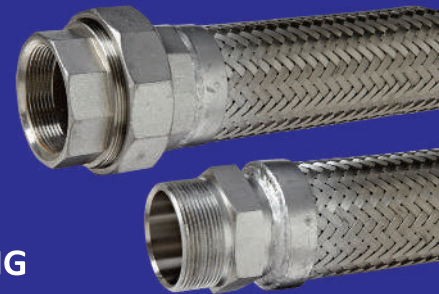
- For Handling Chemicals
- Heat Transmission
- Fertilizers
- Oil Refining
- Petrochemicals
- Lubrication
- Oil & Gas
- Food Processing
- Boilers
- Heat Exchangers
- Conductors For Molten Steel

ADVANTAGES :

- › **Excellent corrosion resistance**
Stainless steel hose construction throughout
- › **High strength & safety**
All-welded assembly gives total integrity of tube, braid and fittings
- › **Wide pressure range**
From full vacuum up to 220 bar, dependent on exact Specification.
- › **Excellent flexibility**
Corrugated tube allows tight, kink-free bends and ease of handling.
- › **Wide temperature range**
Between -200°C and + 500°C dependent on working pressure.
- › **Fire and damage resistant**
Tough, all- metal construction
- › **Long service life**
Without the ageing deterioration of non-metal hoses
- › **Excellent steam resistance**
Longer service life than non-metal steam hoses
- › **Standard Sizes:**
1/4" up to 12" NB. larger sizes are available on request.
- › **Wide range of and fittings:**
BSP, NPT, flanges hygienic type, specials, etc.



NUT FITTING



FLANGED FITTING



NIPPLE FITTING



TRI CLOVER CLAMP FITTING



CAMLOCK FITTING

BAG FILTER HOUSING



SINGLE BAG FILTER HOUSING



MULTI BAG FILTER HOUSING

DESCRIPTION

MOC: SS304/SS316/SS316L/CS/MS/Duplex Steel/HPVC

No. of Bags: Upto 16

Bag Sizes: Ø4"X20", Ø7"X16", Ø7"X32"

Filtration Rating: 5,10,20,25,50,100 & More

Pressure: Upto 15 Bar and More on Request

Flow: Up to 500 M³/HR & More

Line Size: 1" to 24"

Connection: Flanged/TC Clamped/Threaded/Union

Gasket: Silicon,Neoprene,PTFE,Viton

Surface Finish: Matt Finish/Mirror Finish/Paint

Optional Finish: Electro Polished/PP/HDPE Lining/FRP Lining

Design: Standard and Customized as per requirement



High Pressure Hydraulic Hoses

Single Wire Braid Hoses R1

DIN 20022- 1SN (Exceeds SAE R1) Single Wire Braid

Construction Core :-

Tube: Seamless Synthetic rubber,

Reinforcement : 1 high tensile steel wire braid.

Cover: Synthetic Rubber Weather, Oil and abrasion resistant.

Temp Range : -40°C to 100° C

Application : High Pressure Hydraulic Oils, Air and water.

Inside Diameter	OD		Max Working Pressure		Testing Pressure	Min Bursting Pressure	Min Bend Radius
	Inch	MM	PSI	Bar	BAR	BAR	MM
1/4"	6.4	14.1	3265	225	450	900	100
5/16"	7.9	15.7	3120	215	430	860	105
3/8"	9.5	18.1	2610	180	360	720	130
1/2"	12.7	21.5	2320	160	320	640	180
5/8"	15.9	24.7	1890	130	260	520	200
3/4"	19	28.6	1525	105	210	420	240
1"	25.4	36.6	1275	88	176	352	300
1-1/4"	31.8	44.8	915	63	126	252	420
1-1/2"	38.1	52.0	725	50	100	200	500
2"	50.8	65.9	580	40	80	160	630

Double Wire Braid Hoses R2

DIN 20022- 2SN (Exceeds SAE R2) Double Wire Braid

Construction Core:

Tube : Oil & Water resistant synthetic rubber.

Reinforcement : double steel wire braids.

Cover : black colour, synthetic rubber resistance to oil, whether and abrasion.

Temperature range : -40° C to + 100° C

Application : High Pressure Hydraulic Oils, Air and water.

ID	OD	Working Pressure		Bursting Pressure		Bending Radius		Weight		Max. Length
		mm	Inch	BAR	PSI	BAR	PSI	mm	Inch	
6.00	1/4	15.00	400	5800	1600	23200	100	3.90	0.35	100+
8.00	5/16	16.00	350	5075	1400	20300	115	4.50	0.40	100+
10.00	3/8	19.00	330	4785	1320	19140	127	5	0.5	100+
12.00	1/2	22.00	275	3988	1100	15950	178	7.00	0.65	100+
16.00	5/8	25.00	250	3625	1000	14500	200	7.90	0.80	100+
20.00	3/4	29.40	215	3118	860	12470	241	9.50	0.94	100+
25.00	1	37.60	165	2393	660	9570	300	11.80	1.36	100
31.00	1.1/4	48.30	125	1813	500	7250	420	16.50	1.90	50
38.00	1.1/2	54.70	90	1305	360	5220	500	19.7	2.3	50
50.00	2	67.50	80	1160	320	4640	635	25	2.95	40

CARTRIDGE FILTER HOUSING



SINGLE CARTRIDGE FILTER HOUSING



CODE-7 FILTER HOUSING



MULTI CARTRIDGE FILTER HOUSING

DESCRIPTION

MOC: SS304/SS316/SS316L/CS/MS/Duplex Steel

No. of Cartridges: Up to 200 Nos.

Filtration Rating: 0.5 to 75 Micron

Element Size: 10", 20", 30", 40"

Fitting: DOE, SOE (222/Fin, 226/Fin, 222/Flat, 226/Flat)

Pressure: Upto 15 Bar and More on Request

Flow: Up to 800 M³/HR

Line Size: 1" to 24"

Connection: Flanged/TC Clamped/Threaded/Union

Gasket: Silicon, Neoprene, PTFE, Viton

Surface Finish: Matt Finish/Mirror Finish/Paint

Optional Finish: Electro Polished/PP/HDPE Lining/FRP Lining

Design: Standard and Customized as per requirement



PTFE Hose Pipes

P.T.F.E hose has an excellent temperature characteristics both in high and low temperature, Excellent chemical resistance, non contamination properties, low coefficient of friction and resists deterioration. Therefore the hose is used generally in applications where all are one of the above properties is the main criteria.

Convuluted PTFE Hose with Stainless Steel Braid

Convuluted PTFE hose with stainless steel braid is manufactured from a convuluted PTFE inner with a soft, low tensile stainless steel wire braid.

- Key Features:** Excellent flexibility and kink resistance. Excellent chemical and temperature resistance. Easy to clean.
- Temperature:** 70°C to +260°C.
- Applications:** Automotive, steam transfer, refrigeration, chemical.
- Length (mtrs):** Made to order.

Smooth Bore PTFE Hose with Stainless Steel Braid

Smooth bore PTFE hose with stainless steel braid is manufactured from a smooth bore PTFE inner, with a single or double 304 wire braid.

- Key Features:** Flexible, high flow rate. Excellent chemical and temperature resistance, Easy to clean.
- Temperature:** 70°C to +260°C
- Applications:** Steam, chemicals, paint, adhesives, fuels, oils, foodstuffs.
- Length (mtrs):** Made to order.

Smooth Bore Convuluted PTFE Hose with SS Braid

Smooth bore convuluted PTFE hose with stainless steel braid is manufactured from a smooth bore convuluted PTFE inner with a 304 wire braid.

- Key Features:** Excellent flexibility and kink resistance, high flow rate, good chemical and temperature resistance. Easy to clean.
- **Temperature:** 70°C to +260°C
- Applications:** Automotive, refrigeration, steam, gas and chemical.
- Length (mtrs):** Made to order.

Applications

- » Food handling and production.
- » Fluids associated with high temperatures.
- » Petrochem & specialist chemical transferee.
- » Hazardous chemical transfer.
- » Beverage service, handling and production.
- » Conveyance of cosmetic solutions.
- » Fluids associated with pharmaceutical and bio-medical transfer and production.
- » Production of dairy products.
- » Compensation of vibrations and pipe work misalignment within a production line.

BASKET FILTER AND STRAINERS



DESCRIPTION

- MOC:** SS304/SS316/SS316L/CS/MS/Duplex Steel
- No. of Element:** As pre requirement of application
- Filtration Rating:** 0.5 to 1000 Micron & More
- Element Size:** Standard and Customized
- Fitting:** Spring and bolting
- Pressure:** Upto 15 Bar and More on Request
- Flow:** Up to 1000 M³/HR
- Line Size:** 1" to 24"
- Connection:** Flanged/TC Clamped/Threaded/Union
- Gasket:** Silicon,Neoprene,PTFE,Viton
- Surface Finish:** Matt Finish/Mirror Finish/Paint
- Optional Finish:** Electro Polished/PP/HDPE Lining/FRP Lining
- Design:** Standard and Customized as per requirement

Bellows & Expansion Joints

Their construction is similar to the annular corrugated hoses and they are designed to absorb movements due to thermal expansion in all directions. They also absorb noise and vibrations.

The wall thickness of the expansion joint is determined by operating pressures and temperatures along with bellow corrugations.

Specifications

Material : SS304 , SS304L, SS316, SS321 etc.

Ply : Single Ply or Multi-ply

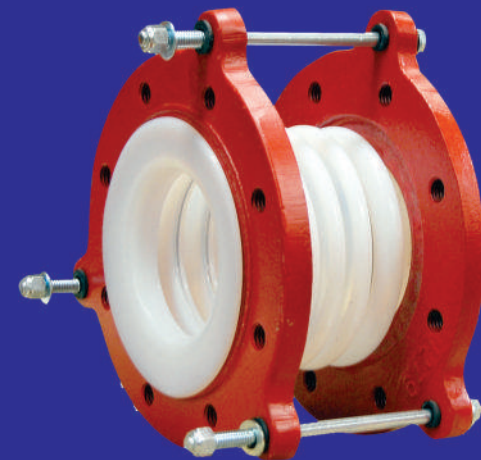
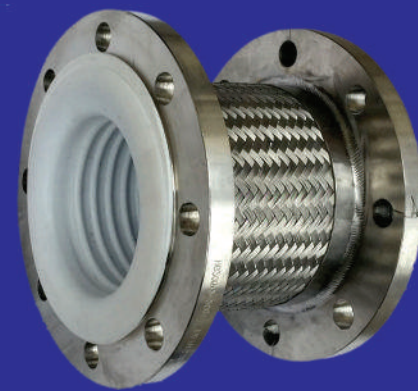
Size Range : N.B. 20 ~ 2000 mm

Formation : Hydro-formed (20 ~300 mm), Roll-Formed (20 ~ 2000 mm)

Joint Type : Axial, Universal, Angular & Lateral-as per requirement

Flange Types : As per customer Specification

Flange Material : Zn coated Steel, SS202, SS304, SS316 or as specified



PTFE EXPANSION JOINTS

PTFE compensators are the best option for each application that requires high resistance to chemicals and temperature, ease of cleaning and long service life. They compensate for thermal deformation, mounting stress and vibrations. Widely used in chemical, food and pharmaceutical industry. Working pressure up to 16 bar, high resistance to vacuum, working temperature up to 235°C.

Nominal diameter range: from DN25 to DN600.

Application

Chemicals And Solvents

Size : 1/2 inch, 3/4 inch, 1 inch, 2 inch, 3 inch

Product description:

Flexo Tech Product manufactures very high quality of SS braided PTFE BELLOWS with Flanged Ends from 3/4" to 4" ID. This Product is highly recommended for Pharmaceutical, Breweries and Distilleries. Available with SS 304 and 316 grade Flanges.

BACKWASH TYPE FILTER HOUSING



DESCRIPTION

MOC: SS304/SS316/SS316L/CS/MS/Duplex Steel

Filtration Rating: 0.5 to 1000 Micron & More

Element Size: Standard and Customized

Pressure: Up to 15 bar and More on Request

Flow: Up to 1000 M³/HR

Line Size: 1" to 24"

Connection: Flanged/TC Clamped/Threaded/Union

Backwash Operation: Manually/Automatic

Gasket: Silicon, Neoprene, PTFE, Viton

Surface Finish: Matt Finish/Mirror Finish/Paint

Optional Finish: Electro Polished/PP/HDPE Lining/FRP Lining

Design: Standard and Customized as per requirement

GAS HOSE

Application

P.T.F.E. hose has an excellent temperature characteristics both in high and low temperature, Excellent chemical resistance, non contamination properties, low coefficient of friction and resists deterioration. Therefore the hose is used generally in applications of HCl Gas, Cl₂ Gas, NH₃ Gas, H₂ Gas, N₂ Gas. where all or one of the above properties is the main criteria. Transport of cryogenic gases at high pressure.

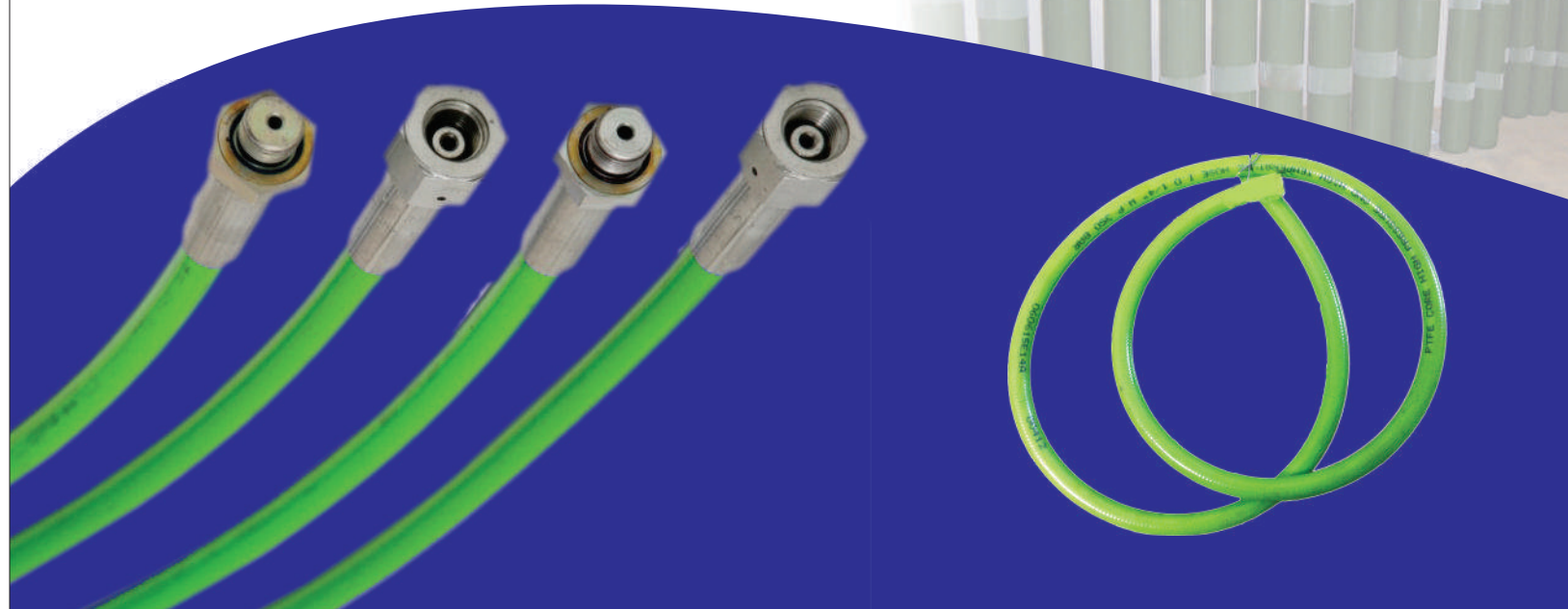
Code	Dash size	DN	Hose I.D. (Nom.)		Hose O.D. (Nom.)		Working Pressure		Min. Burst Pressure		Min. Bend Radius	
Part#			inch	mm	inch	mm	psi	bar	psi	bar	mm	inch
4	-4	6	1/4	6.4	0.45	11.5	5300	365	15900	1095	40	1.60
5	-5	8	5/16	8.0	0.49	12.5	4560	315	13680	945	45	1.80
6	-6	10	3/8	9.5	0.57	14.6	4350	300	13050	900	65	2.60
8	-8	12	1/2	12.7	0.73	18.5	3840	265	11520	795	75	3.00
10	-10	16	5/8	16.0	0.85	21.6	3400	235	10200	705	115	4.60
12	-12	19	3/4	19.0	0.96	24.5	2900	200	8700	600	240	9.60
16	-16	25	1	25.4	1.20	30.5	2170	150	6510	450	320	12.80

Construction Core :

Tube : Special quality of sintered tube of polytetrafluoroethylene (P.T.F.E.).

Reinforcement : Double braids of 303/304 series of stainless steel wire

Temperature Range : Continuous: -60°C to +260°C



DUPLEX BAG FILTERS AND STRAINERS



DESCRIPTION

MOC: SS304/SS316/SS316L/CS/MS/Duplex Steel

No. of Element: As pre requirement of application

Filtration Rating: 0.5 to 1000 Micron & More

Element Size: Standard and Customized

Fitting: Spring and bolting

Pressure: Upto 15 Bar and More on Request

Flow: Up to 1000 M³/HR

Line Size: 1" to 24"

Connection: Flanged/TC Clamped/Threaded/Union

Gasket: Silicon, Neoprene, PTFE, Viton

Surface Finish: Matt Finish/Mirror Finish/Paint

Optional Finish: Electro Polished/PP/HDPE Lining/FRP Lining

Design: Standard and Customized as per requirement

XLPE Chemical Hose

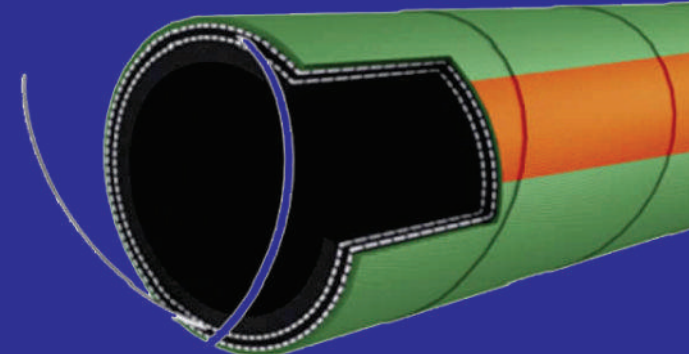
Application

Hardwall Hose Suitable for handling & Wide Range of Chemical, Petroleum, Oil and normally Installed on tank Trucks & Suction & Discharge of a Variety of Chemicals & Solvents.

SKU	ID (inch)	OD (inch)	Working Pressure (psi)	Braids	Bend Radius (inch)	Length (foot)	Weight (lbs/ft)
XLPE-075	3/4	1.21	250	4	5	100/200	0.32
XLPE-100	1	1.51	250	4	6	100/200	0.38
XLPE-125	1-1/4	1.72	250	4	7	100/200	0.45
XLPE-150	1-1/2	1.99	250	4	9	100/200	0.61
XLPE-200	2	2.52	250	4	11	100/200	0.75
XLPE-250	2-1/2	3.03	250	4	12	100/200	0.95
XLPE-300	3	3.65	250	4	15	100/200	1.25
XLPE-400	4	4.68	250	4	20	100/200	1.55

Construction Core :

- Tube** : Clear XLPE (Cross Linked Polyethylene) Smooth & Wrapped Finish
- Cover** : Green EPDM with Ozone and Chemical Resistance
- Reinforcement** : High Tensile Helix Wire between Multiple Plies of Textile Cords
- Temperature** : -40°C to +70°C Depending on Medium.



DUST COLLECTION FILTER CARTRIDGES



DESCRIPTION

- Size:** Standard and customized
- Type:** Flange Type & Tie Rod Fitting, Collar Type, Lug Type
- Micron Rating:** 1, 5, 10, 25, 50
- MOC of Caps:** Aluminum, GI, SS, PU Rubber
- MOC of Filter Media:** PP, Spun bonded, Cellulose Paper

DUST COLLECTION FILTER BAGS



DESCRIPTION

- Size:** Standard & Customized
- Fitting:** Snap Band, Collar Type, Ring Type
- Micron Rating:** 1 to 500
- MOC of Filter Media:** Ryton, Nomex, Polyester, Acrylic, Glass Fiber
- Temperature:** Ambient to 350°C

SS and MS - Hydraulic Hose End Fittings



Hose Couplings



Industrial Hose Fittings



Hose Fittings



Ferrule Fittings



benzo Fittings



Hydrojet Fitting



Male Female Reducer



Hex Nipple



Hose Connections



Hex Plug

FILTER CARTRIDGES

PP SPUN CARTRIDGE (MELT BLOWN)

DESCRIPTION

Size: 10", 20", 30", 40"
Fitting: DOE/Code-7/Code-3
Micron Rating: 1,5,10,25,50,75,100
Construction: 100% Polypropylene
Outer Diameter: 64mm(2.5"),100mm(4"),114mm(4.5")
Inner Diameter: 28 MM



PP WOUND CARTRIDGE (HONEYCOMB)

DESCRIPTION

Size: 10", 20", 30", 40"
Fitting: DOE/Code-7/Code-3
Micron Rating: 1,5,10,25,50,75,100
Construction: 100% PP/PP core, Cotton/SS Core, Glass fiber/SS Core
Outer Diameter: 64mm(2.5"),100mm(4"),114mm(4.5")
Inner Diameter: 28 mm



SINTERED POWDER CARTRIDGE

DESCRIPTION

Size: 10", 20", 30", 40"
Fitting: DOE/Code-7/Code-3/NPT/BSP(F)
Type: Cylindrical
Micron Rating: 0.2,0.45,1,5,10,20,50 & More
MOC: SS304/SS316/SS316L/Sintered Ceramic/Sintered PP/Sintered PTFE
Gasket: Silicon, EPDM, Viton, Buna-N
Outer Diameter: 64mm(2.5")
Inner Diameter: 28 mm



SINTERED CERAMIC CARTRIDGE

DESCRIPTION

Size: 10", 20", 30", 40"
Fitting: DOE/SOE
Type: Cylindrical
Micron Rating: 1,5,10,20,50 & More
MOC: Ceramic
Gasket: Silicon, EPDM, Viton, Buna-N



FILTER BAGS



LIQUID FILTER BAGS

DESCRIPTION

Size: 4"X10", 4"X 20", 7"X16", 7"X32" & Customized
Fitting: Polyloc/ss ring
Micron Rating: 1,5,10,15,25,50,100 & More
MOC of Media: PP, Polyester, Nylon, Woven & Nonwoven Felt
Construction: 100% Welded, 100% Stitched



FBD/FBP FILTER BAGS & CENTRIFUGE FILTER BAGS

DESCRIPTION

Size: Standard & Customized
Micron Rating: 1,5,10,15,25,50,100 & More
MOC of Media: PP, Polyester, Antistatic PP, Antistatic Polyester, Satin
Capacity: 3 Kgs to 500 Kgs
Fitting: SS Strip, String and standard regular

FILTER CARTRIDGES

PP PLEATED CARTRIDGE

DESCRIPTION

Size: 10", 20", 30", 40"
Fitting: DOE/Code-7/Code-3
Micron Rating: 0.1,0.2,0.45,1,5,10,20,50
MOC: PP/PTFE/PES/PVDF
Gasket: Silicon, EPDM, Viton, Buna-N
Outer Diameter: 69mm(2.5")
Inner Diameter: 28 mm



HYDRAULIC & OIL FILTER CARTRIDGE

DESCRIPTION

Size: 10", 20", 30", 40"
Fitting: DOE/SOE
Type: cylindrical & Pleated
Micron Rating: 1,5,10,20,50,100 & More
MOC of Media: Glass Fiber, SS Wire Mesh, synthetic fiber, Sintered metal fiber, Cellulose paper
MOC of Caps: SS/GI/Aluminum/plastic
Gasket: Silicon, EPDM, Viton, Buna-N

RESIN BONDED CARTRIDGE

DESCRIPTION

Size: 10", 20", 30", 40"
Fitting: DOE/SOE (SOE End connections available as special)
Type: Grooved & Ungrooved
Micron Rating: 0.2,0.45,1,5,10,20,50 & More
MOC: Phenolic Resin Bonded, Cellulose Resin Bonded, Melamine Resin Bonded
Gasket: Silicon, EPDM, Viton, Buna-N
Temperature: 120°C
Colour: White and Brown
Outer Diameter: 64mm(2.5")
Inner Diameter: 28 mm



STAINLESS STEEL CARTRIDGE

DESCRIPTION

Size: 10", 20", 30", 40"
Fitting: DOE/Code-7/Code-3/NPT/BSP(F)
Type: Cylindrical & Pleated
Micron Rating: 0.2,0.45,1,5,10,20,50 & More
MOC: SS304/SS316/SS316L/Sintered Powder/Sintered N/W Fiber Felt
Gasket: Silicon, EPDM, Viton, Buna-N
Outer Diameter: 64mm(2.5")
Inner Diameter: 28 mm



FILTER PAPER ROLLS



COOLANT FILTER PAPER ROLL

DESCRIPTION

Size: 4"X10", 4"X 20", 7"X16", 7"X32" & Customized

Fitting: Polyloc/ss ring

Micron Rating: 1,5,10,15,25,50,100 & More

MOC of Media: PP, Polyester, Nylon, Woven & Nonwoven Felt

Construction: 100% Welded, 100% Stitched

FILTER MEDIA



FILTER MEDIA (WOVEN & NON-WOVEN)

DESCRIPTION

Discription: Non-woven filter paper media

Size: Customised

Micron 1, 3, 5, 10, 20, 30, 50, 100

MOC of Filter Media: Popypropylene, Polyester, Cotton, Glass, Fibre, Aramide, Nylon, HDPE

AIR PANEL FILTER



DESCRIPTION

Size: Standard and Customized

Fitting: Box Type, Flange Type, Frame Type and Customized

Micron Rating: Up to 500 & More

MOC of Frame: SS/GI/Aluminum

MOC of Filter Media: Glass Fiber, PP, Polyester, Polyfoam, Synthetic,
SS Wiremesh, Hyloft, Nonwoven Felt, HDPE/Nylon Mesh

OUR VALUABLE CLIENT



📍 Madhav Industrial Park, Phase-II, Plot No.2/ Part-2, Garden City Road, Ankleshwar-393002

📞 9924309387 / 9558844655

✉️ info@matrin.in